

HAND DRY CUTTER 8203E

CORDLESS



Cordless metal cutting circular saw by Jepson
Power for fast and burr free cutting of metal sheets, gratings, sandwich panels, etc. without coolant

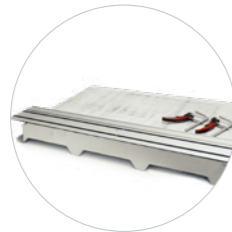
- No need for lubrication thanks to our dry cut technology
- Ideal for cutting metal sheets, gratings, sandwich panels, trapezoidal sheets, steel pipes & profiles, nonferrous metals and composite materials
- Chip collector for clean work

Included:

- Carry case
- Ø 8" (203 mm) /48T CT saw blade „LBS impact resistant“
- 2x high performance 18V LiHD 5,5A batteries
- Air-cooled LiHD high speed loading station (115V)



Ideal for cutting metal sheets, gratings and sandwich panels up to 2 5/8" (67 mm)



Optional: Guide rail 4 ft 7" (1.400 mm) with 2 C-clamps 608275SET



Depth adjustment with scaling



Chip compartment



CAS battery-powered

Voltage	No load speed	Net weight	Blade size	Bore
18 V	3.500 min ⁻¹	12 lbs (5,4 kg)	Ø 8" (203 mm)	Ø 1" / 0.79" (25,4 / 20 mm)

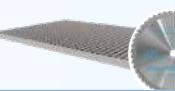

Hand Dry Cutter 8203E	Reference
with Ø 8" (203 mm) 48T LBS saw blade impact-resistant, 2x high performance 18V LiHD 5,5A batteries, Air-cooled LiHD high speed loading station (115V) and carry case	608295ENA

	Max. cutting capacities	
	90°	45° (bevel cut)
Round	2 5/8" x 1/4" 67 x 6 mm	1 5/8" x 1/4" 42 x 4 mm
Square	2 5/8" x 2 5/8" x 1/4" 67 x 67 x 6 mm	1 5/8" x 1 5/8" x 3/16" 42 x 42 x 4 mm
Angle	2 5/8" x 1/4" 67 x 6 mm	1 5/8" x 1/4" 42 x 4 mm
Plane	3/16" 10 mm	5/16" 8 mm
Cutting depth	2 5/8" 67 mm	1 5/8" 42 mm



ACCESSORIES (OPTIONAL)

Selecting the correct number of teeth depends on the wall/diameter of the material. We will be happy to advise you. (201)-916-4709

Carbide tipped saw blades	Ø		Teeth	Bore		Kerf		Max. Speed	Reference
	mm	inch		mm	inch	mm	inch		
Steel (thin-walled) "LBS - impact resistant"	230	8	48	25,4	1	1,2	.047	3.800 min ⁻¹	72220348 
Stainless steel	230	8	54	25,4	1	1,7	.067	3.500 min ⁻¹	72120354I 



High performance 18V LiHD 5,5A battery (CAS)

Ref. 608295EB



Air-cooled LiHD high speed loading station

Ref. 230 V 608295EC2
 Ref. 115 V 608295EC1



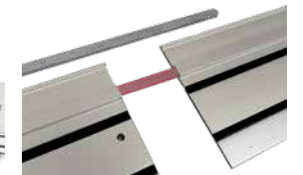
Set of 2 adapters

Ref. 608275A



Guide rail set

Length 4 ft 7" / 1.400 mm
 C-clamps 2 pieces
 Ref. 608275SET



Connector for additional guide rails

Ref. 608275B